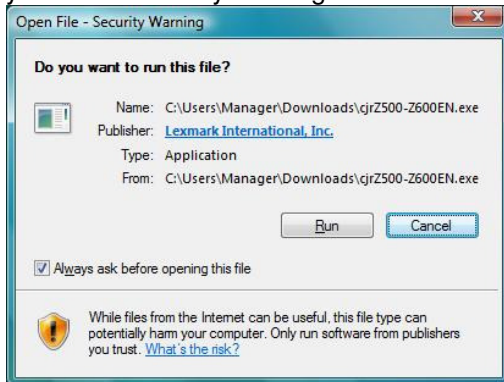
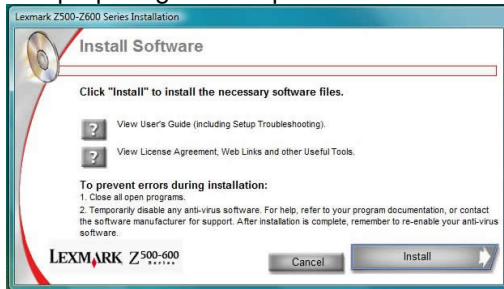


Lexmark Z500-Z600 Printer Installation for Windows Vista Business

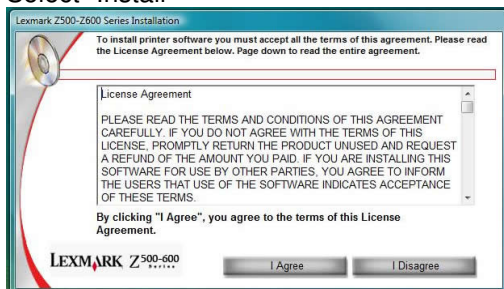
First of all double click on the downloaded file "cjrZ500-Z600EN". It will then prompt you with a security warning.



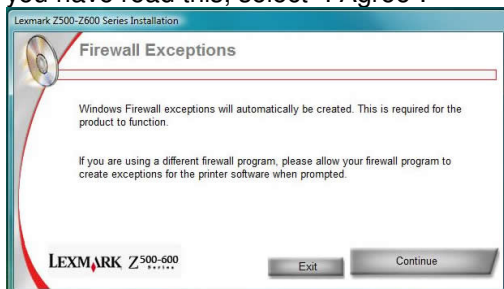
Select "Run". Then you will see a window with a progress bar, the file is extracting and preparing the setup.



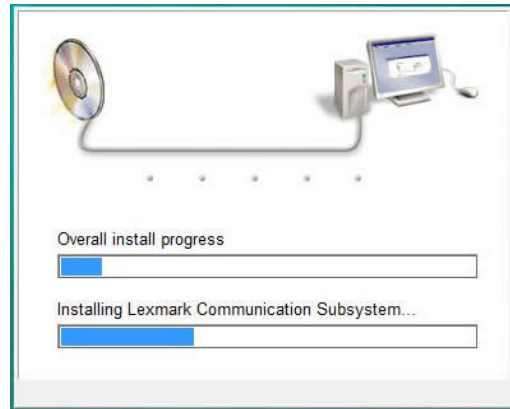
The Lexmark Installer will then show up on your screen. Take the time to read what information is provided so you don't encounter any issues when installing. Select "Install"



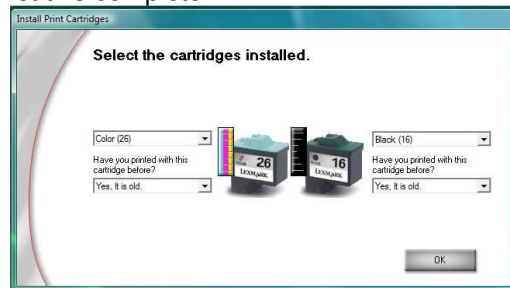
A Licence agreement will come up, once you have read this, select "I Agree".



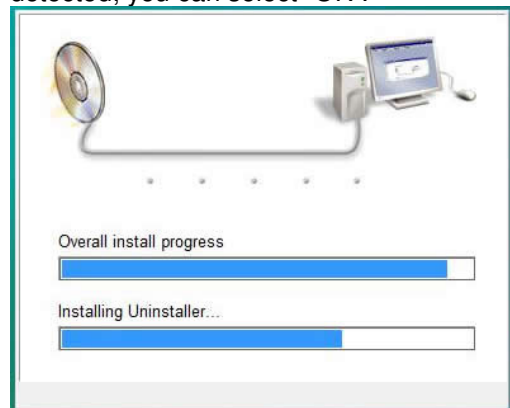
It will then tell you Windows Firewall exceptions will be automatically created. Select "Continue".



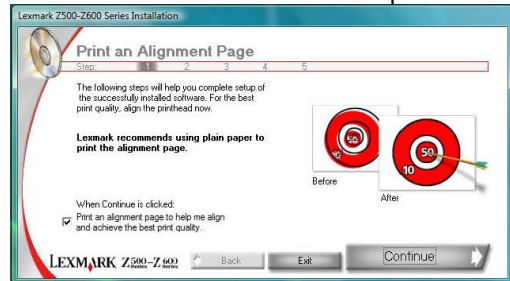
It will then show you an installation screen, let this complete.



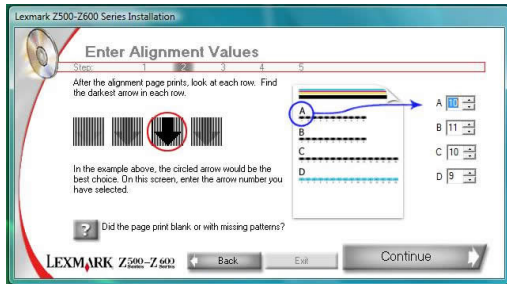
It will then ask you to select the cartridges installed. They are normally automatically detected; you can select "OK".



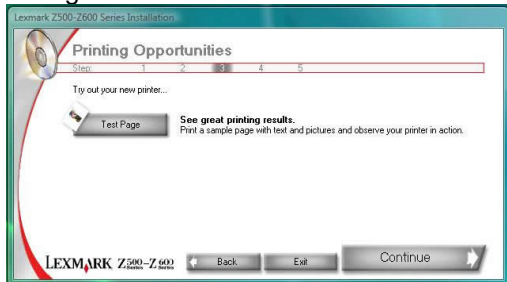
Once again it will go through another installation screen. Let this complete.



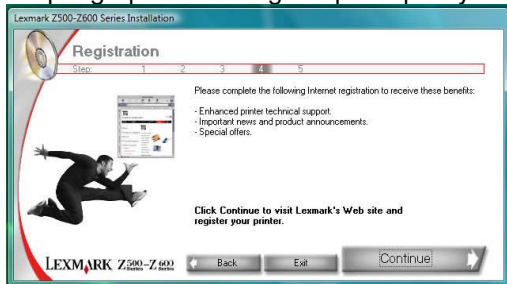
You can then setup the alignment for the best quality picture. Select "Continue" and a page will print out from the Lexmark Printer.



Looking at the paper it will have a series of printed out arrows with numbers below. Find the darkest arrow in each row and type the row number in the box provided to the right. Select "Continue" when finished.



Now your printer is aligned you have the option to print a test page. Select "Test Page" and then select "Continue". The printer will print a test page, this is a simple graphic showing the print quality.



The next step is registration, this is optional. When you select "Continue" it will open up Internet Explorer (web browser) and navigate to the Lexmark website so you can register.



You're at the end of the printer setup. Ensure "Create a shortcut icon on my desktop" is ticked and then select "Finished".



On your desktop you should see the Lexmark shortcut.

You have now successfully setup the Lexmark printer.